

# The Mattole Messenger

The Newsletter of Mattole Camp and Retreat Center

Issue 3

Winter 2003

## Director's Report By Steve Lovett

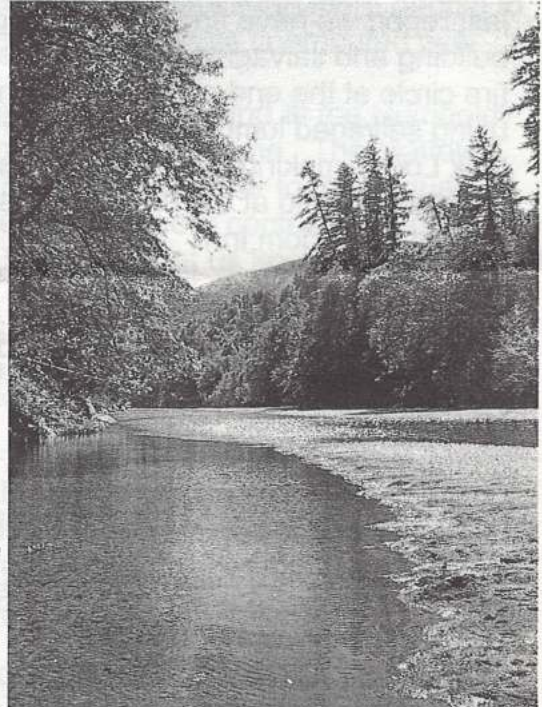
Another successful year has passed and Mattole Camp and Retreat Center continues to expand its visitation, income, projects and vision. With the expansion of our visitation and income, we are developing new projects and plans!

After living and working on the same piece of land for several years, people begin to develop an intimate connection with each area of their land. Connecting to one's surroundings is an integral part of creating an appropriate vision for the future. That vision for the future has been continuing to evolve for me and the Mattole Camp Council as we begin to develop the Mattole Camp and Retreat Center site plan. This plan will include a detailed description of our current facilities and their location. In addition, the plan will include our future hopes and dreams, including

new cabins, trails, benches, picnic tables and swings. We encourage public participation with this plan, particularly with those groups or individuals who have been supporting our camp over the years. If you have any ideas about what you would like to see the camp become, please contact us!

In the meantime we have continued to improve the camp function and aesthetics by opening up areas of the camp that had succumbed to brush. As the camp becomes busier throughout the years, there has been a need to clear and maintain areas that provide visitors additional space for relaxation and/or physical activity. Most of the work has concentrated on clearing brush and removing an old log pile next to Sun Up Cabin and opening up the brushy area adjacent to the volleyball court, cargo net and the upper road. The later area will expand our space for the low ropes course we plan to have in operation by 2003 camping season.

We are grateful for the accomplishments the camp has made due to tireless contributions from the Mattole Camp Council and the volunteers at our monthly work parties. Volunteering is a selfless commitment to a greater cause and those who donate their time to volunteering at the camp are essential to our operation! We realize, for many, time is a limited resource which makes volunteering very difficult. This makes us all the more appreciative! Our volunteers are fundamental to the camp's success and achievements. We would like to invite anyone interested in helping out at the camp to give us a call.





---

## Getting busy with Buildings and Grounds

By Dave Goodman

The Building and Ground Committee always has a lot on its plate. Since our last report we have finished cleaning up after the demolition of the old Infirmary building and salvaging all lumber we could. With some of the lumber we created a new fire circle at the end of camp near the river deck and the trail down to the river. Again using salvaged lumber, a stair entry way was constructed on the south side of the Tan Oak Lodge making accessibility easier and more inviting to visitors. In 2003 we hope to create a patio at the base of the stairs and a paved pathway leading to the road way in front of Seldom Inn.

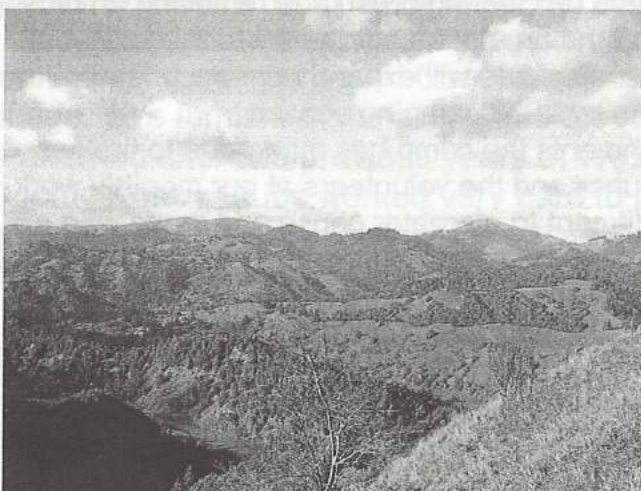
Stone Church, located in San Jose, came up again this year and got us started on remodeling Seldom Inn, constructed a roof over our spring, painted cabins and our water treatment building.

Visitors to the camp this year should notice a new entrance sign. We believe it is more visible and serve's as a welcome to all that journey to the camp. We are in the process of making other signs to aid our visitors in their comfort, safety and information. We are developing a low ropes course in the area around the volley ball court. Several elements are complete and more are expected soon. Of course there are all the little fix it jobs that go on during the year and the less glamorous maintenance that routinely happens to keep our center up and going year round.

We have some great ideas and plans for the future and hope to share some of them next time. Meanwhile, we would like to thank all who have lent their hands and skills (both mind and body) this past year to improve our facilities. We appreciate your effort and do not take them for granted.



Members from Stone Church take a break from a hard days work



---

### Next Issue...

- Report on camp usage
  - Update on site plan
  - Plans for new house and cabins
  - Friends of Mattole statement
  - Report from the Council Chair
  - Buildings and Grounds review
  - Goals for 2004
-



---

## Friends of Mattole Camp are at it again!

By Alex Reid

Thanks to the "Friends of Mattole Camp", good things are happening at the Presbyterian campground! New and continuing members are joining a successful effort to beautify the Mattole Camp and Retreat Center and invite even more people to enjoy this scenic place. As the year closed, the Friends of Mattole contributed over \$3000 our annual fundraising campaign.

Last year we established the Mattole Camp Endowment Fund at the Humboldt Area Foundation to ensure our camp's future for generations to come. The Mattole Camp Council welcomes and appreciates gifts in any amount, either to the annual fundraising campaign or the endowment fund. Please send your contribution to Mattole Camp, 36841 Mattole Road, Petrolia, CA 95558 and let us know how you'd like to see the Council invest your gift.

The Council also invites you to join us on Saturday, April 26 for a "Friends of Mattole" party at the camp. Come see the wild iris in bloom, the river in flow and many dear people who have contributed to the camp. We are grateful for your support.

---

### Wish List

Post hole diggers  
Shovels  
Mattocks  
Loppers  
Bow saw, Hand saw  
Garden Cart  
Bolt Cutters  
Mulch  
New paint brushes  
Tarps  
House plants  
Landscaping plants  
Hammers  
Screwdrivers  
Other working tools  
First Aid Supplies  
Volley ball net

*If you have something  
you would like to  
donate to the camp  
that is not on the list  
above, please call the  
camp at  
(707) 629-3308*

### Mattole Camp and Retreat Center Council

Wayne Johnson, *Chair*  
Javan Reid, *Co-Chair, Treasurer*  
Alex Reid, *Personnel*  
Dave Goodman, *Buildings and Grounds*  
Lee Dedini, *Buildings and Grounds*  
Kathy Goodman, *Secretary*  
Marlene McGrath, *Bookkeeper*  
Meredith Phillips, *Buildings and Grounds*  
Barbara Burke, *Marketing*  
Dave Milke, *Buildings and Grounds*  
Bill Combs, *Buildings and Grounds*  
Steve Lovett, *Director*



Mattole Camp is owned by the Presbytery of the Redwoods, Presbyterian Church (U.S.A.). Our camp is open to everyone, regardless of race, gender, disability, class or religious persuasion

---



---

## From the Council Chair

As the year fades memories are slow to dissipate. Speaking for the Council it was an exciting year with an increase in camper days, catching up on major maintenance, dreaming about the future of the camp and just enjoying working with the council and our director, Steve Lovett.

You can't imagine what it feels like to have a meeting about Mattole and not be in a panic about some disaster of maintenance, finances or personnel. Indeed we have had to deal with the ongoing upkeep of the camp, but there has been time and finances to begin to expand our horizons with respect to camp facilities. Working with Robert Lameris, an architect who belongs to the Garberville church, we are creating a new site plan that includes a low level ropes course, parking lot at the lodge, new entry to the lodge, and even a new director's home.



Dreaming? You bet! But there are some elements of the ropes course in place, new steps to the lodge have been installed, plans are forming for the "garden path" leading to the new steps and Seldom Inn is partially renovated to accommodate small groups of 10 to 12 for private conferences or retreats.

Of course the big dream is a new home for the director. Some preliminary plans have been drawn

and throughout 2003 we will work with Robert Lameris to take the steps to finish the design, draw up the prints, and as we are able, work through the process to excite others about this project and just see if there is enough interest and grant money to make it fly. Your prayers are requested.

A new innovation in camping for us occurred this last season as we hosted a Rotary sponsored Cool Kids Camp for abused children, 8 to 12 years of age. We furnished the facility and the food and Rotary did the rest.

Patterned after two previous years at Westminster Woods, the Humboldt County Rotary Clubs worked very hard to put this camp on. Most of the participants definitely want to attend next year. Plans are moving in that direction for the camp next July.

Again, my gratitude goes to our Council for their commitment, expertise and just plain hard work. Thank you very much and God continue to bless Mattole with all of your efforts.

Peace, Wayne Johnson

---